

KENWOOD

Document Copyrights

Copyright 2006 by Kenwood Corporation. All rights reserved.

No part of this manual may be reproduced, translated, distributed, or transmitted in any form or by any means, electronic, mechanical, photocopying, recording, or otherwise, for any purpose without the prior written permission of Kenwood.

Disclaimer

While every precaution has been taken in the preparation of this manual, Kenwood assumes no responsibility for errors or omissions. Neither is any liability assumed for damages resulting from the use of the information contained herein. Kenwood reserves the right to make changes to any products herein at any time for improvement purposes.

UHF FM TRANSCEIVER

TK-890/890(B) TK-890H(B)

SERVICE MANUAL SUPPLEMENT II

KENWOOD

Kenwood Corporation

© 2006-3 PRINTED IN JAPAN
B51-8719-10 (N) PDF

This service manual applies to products with 50700156 (TK-890), 50700001 (TK-890(B)), 60600001 (TK-890H(B)) or subsequent serial numbers.

TK-890 or TK-890(B) with KCH-10



TK-890H(B)



CONTENTS

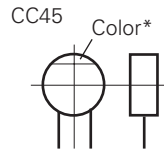
PARTS LIST	2
PC BOARD	
FINAL UNIT (X57-5620-XX) (C/3) : TK-890/890(B)	6
FINAL UNIT (X45-3570-10) : TK-890H(B)	8
SCHEMATIC DIAGRAM	
FINAL UNIT (X57-5620-XX) (C/3) : TK-890/890(B)	12
FINAL UNIT (X45-3570-10) : TK-890H(B)	14

PARTS LIST

CAPACITORS

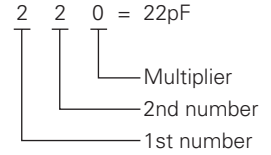
$\frac{C}{1} \frac{C}{2} \frac{45}{3} \frac{TH}{4} \frac{1H}{5} \frac{220}{6} \frac{J}{6}$

- 1 = Type ... ceramic, electrolytic, etc.
- 2 = Shape ... round, square, etc.
- 3 = Temp. coefficient
- 4 = Voltage rating
- 5 = Value
- 6 = Tolerance



• Capacitor value

- 010 = 1pF
- 100 = 10pF
- 101 = 100pF
- 102 = 1000pF = 0.001μF
- 103 = 0.01μF



• Temperature coefficient

1st Word	C	L	P	R	S	T	U
Color*	Black	Red	Orange	Yellow	Green	Blue	Violet
ppm/°C	0	-80	-150	-220	-330	-470	-750

2nd Word	G	H	J	K	L
ppm/°C	±30	±60	±120	±250	±500

Example : CC45TH = -470±60ppm/°C

• Tolerance (More than 10pF)

Code	C	D	G	J	K	M	X	Z	P	No code
(%)	±0.25	±0.5	±2	±5	±10	±20	+40 -20	+80 -20	+100 -0	More than 10μF : -10~+50 Less than 4.7μF : -10~+75

(Less than 10pF)

Code	B	C	D	F	G
(pF)	±0.1	±0.25	±0.5	±1	±2

• Voltage rating

2nd word \ 1st word	A	B	C	D	E	F	G	H	J	K	V
0	1.0	1.25	1.6	2.0	2.5	3.15	4.0	5.0	6.3	8.0	-
1	10	12.5	16	20	25	31.5	40	50	63	80	35
2	100	125	160	200	250	315	400	500	630	800	-
3	1000	1250	1600	2000	2500	2150	4000	5000	6300	8000	-

CHIP CAPACITORS

(EX) $\frac{C}{1} \frac{C}{2} \frac{73}{3} \frac{F}{4} \frac{SL}{5} \frac{1H}{6} \frac{000}{7} \frac{J}{7}$

(Chip) (CH, RH, UJ, SL)

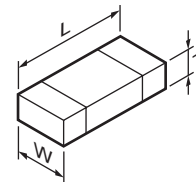
(EX) $\frac{C}{1} \frac{K}{2} \frac{73}{3} \frac{F}{4} \frac{F}{5} \frac{1H}{6} \frac{000}{7} \frac{Z}{7}$

(Chip) (B, F)

Refer to the table above.

- 1 = Type
- 2 = Shape
- 3 = Dimension
- 4 = Temp. coefficient
- 5 = Voltage rating
- 6 = Value
- 7 = Tolerance

• Dimension



Chip capacitor

Code	L	W	T
Empty	5.6±0.5	5.0±0.5	Less than 2.0
A	4.5±0.5	3.2±0.4	Less than 2.0
B	4.5±0.5	2.0±0.3	Less than 2.0
C	4.5±0.5	1.25±0.2	Less than 1.25
D	3.2±0.4	2.5±0.3	Less than 1.5
E	3.2±0.2	1.6±0.2	Less than 1.25
F	2.0±0.3	1.25±0.2	Less than 1.25
G	1.6±0.2	0.8±0.2	Less than 1.0
H	1.0±0.05	0.5±0.05	0.5±0.05

Chip resistor

Code	L	W	T
E	3.2±0.2	1.6±0.2	1.0
F	2.0±0.3	1.25±0.2	1.0
G	1.6±0.2	0.8±0.2	0.5±0.1
H	1.0±0.05	0.5±0.05	0.35±0.05

RESISTORS

• Chip resistor (Carbon)

(EX) $\frac{R}{1} \frac{D}{2} \frac{73}{3} \frac{E}{4} \frac{B}{5} \frac{2B}{6} \frac{000}{7} \frac{J}{7}$

(Chip) (B, F)

• Carbon resistor (Normal type)

(EX) $\frac{R}{1} \frac{D}{2} \frac{14}{3} \frac{B}{4} \frac{B}{5} \frac{2C}{6} \frac{000}{7} \frac{J}{7}$

(Chip) (B, F)

- 1 = Type ... ceramic, electrolytic, etc.
- 2 = Shape ... round, square, etc.
- 3 = Dimension
- 4 = Temp. coefficient
- 5 = Voltage rating
- 6 = Value
- 7 = Tolerance

• Rating wattage

Code	Wattage	Code	Wattage	Code	Wattage
1J	1/16W	2C	1/6W	3A	1W
2A	1/10W	2E	1/4W	3D	2W
2B	1/8W	2H	1/2W		

TK-890/890(B)/890H(B)

PARTS LIST

* New Parts. Δ indicates safety critical components.

Parts without **Parts No.** are not supplied.

Les articles non mentionnés dans le **Parts No.** ne sont pas fournis.

Teile ohne **Parts No.** werden nicht geliefert.

L : Scandinavia

Y : PX (Far East, Hawaii)

Y : AAFES (Europe)

K : USA

T : England

X : Australia

P : Canada

E : Europe

M : Other Areas

FINAL UNIT (X57-5620-XX) (C/3) : TK-890/890(B)

Ref. No.	Address	New parts	Parts No.	Description	Desti-nation	Ref. No.	Address	New parts	Parts No.	Description	Desti-nation
FINAL UNIT (X57-5620-XX) (C/3) : TK-890/890(B)						FINAL UNIT (X57-5620-XX) (C/3) : TK-890/890(B)					
-10 : TK-890/890(B) K -11 : TK-890(B) K2 -12 : TK-890(B) K3											
C1			CK73GB1H471K	CHIP C 470PF K		CN1			E04-0154-05	PIN SOCKET	
C2			C92-0721-05	ELECTRO 330UF 25WV		CN2			E23-0902-05	TERMINAL	
C4			C92-0721-05	ELECTRO 330UF 25WV		CN3			E04-0154-05	PIN SOCKET	
C5			CK73FB1H472K	CHIP C 4700PF K		CN4			E23-1118-05	TERMINAL	
C6			CK73GB1H471K	CHIP C 470PF K		W1			E37-0705-05	LEAD WIRE WITH CONNECTOR	
C11			C92-0725-05	ELECTRO 10UF 35WV	K,K2	W2			E37-0704-05	LEAD WIRE WITH CONNECTOR	
C12			CK73FB1H472K	CHIP C 4700PF K		L1			L34-4556-05	AIR-CORE COIL	
C13			C93-0556-05	CHIP C 6.0PF D	K2	L2			L34-4523-05	AIR-CORE COIL	
C16			C93-0552-05	CHIP C 2.0PF C	K	L3-5			L34-4517-05	AIR-CORE COIL	
C16			C93-0553-05	CHIP C 3.0PF C	K3	L6			L34-4523-05	AIR-CORE COIL	
C16			C93-0557-05	CHIP C 7.0PF D	K2	L7			L34-4517-05	AIR-CORE COIL	
C19			C93-0553-05	CHIP C 3.0PF C	K2	R1			RK73FB2A331J	CHIP R 330 J 1/10W	
C19			C93-0554-05	CHIP C 4.0PF C	K	R2,3			RK73FB2A330J	CHIP R 33 J 1/10W	
C19			C93-0555-05	CHIP C 5.0PF C	K3	R4			RK73FB2A331J	CHIP R 330 J 1/10W	
C20			CK73GB1H471K	CHIP C 470PF K		R6			R92-1214-05	CHIP R 120 J 1/2W	
C22			CK73FB1H471K	CHIP C 470PF K		R12			RK73FB2A101J	CHIP R 100 J 1/10W	
C23			C93-0599-05	CHIP C 470PF K		R14			RK73FB2A101J	CHIP R 100 J 1/10W	K,K2
C24			C93-0554-05	CHIP C 4.0PF C	K,K2	R14			RK73FB2A820J	CHIP R 82 J 1/10W	K3
C24			C93-0556-05	CHIP C 6.0PF D	K3	R801			RK73GB1J152J	CHIP R 1.5K J 1/16W	
C27			C93-0553-05	CHIP C 3.0PF C	K2	R802			RK73GB1J822J	CHIP R 8.2K J 1/16W	
C27,28			C93-0555-05	CHIP C 5.0PF C	K	R803,804			RK73GB1J102J	CHIP R 1.0K J 1/16W	
C27,28			C93-0557-05	CHIP C 7.0PF D	K3	R805			RK73GB1J103J	CHIP R 10K J 1/16W	
C28			C93-0555-05	CHIP C 5.0PF C	K2	R806			RK73GB1J182J	CHIP R 1.8K J 1/16W	
C29			CC73FCH1H030C	CHIP C 3.0PF C		R807,808			RK73GB1J104J	CHIP R 100K J 1/16W	
C30			C93-0554-05	CHIP C 4.0PF C	K2	R809			RK73GB1J103J	CHIP R 10K J 1/16W	
C30			C93-0555-05	CHIP C 5.0PF C	K	R810			RK73GB1J154J	CHIP R 150K J 1/16W	
C30			C93-0556-05	CHIP C 6.0PF D	K3	R811			RK73GB1J224J	CHIP R 220K J 1/16W	
C31			CK73GB1H471K	CHIP C 470PF K		R812			RK73GB1J274J	CHIP R 270K J 1/16W	
C32			CK73FB1H471K	CHIP C 470PF K		R813			RK73GB1J222J	CHIP R 2.2K J 1/16W	
C33			CC73FCH1H070D	CHIP C 7.0PF D		R814			RK73GB1J123J	CHIP R 12K J 1/16W	
C34			CK73FB1H471K	CHIP C 470PF K		R815			RK73GB1J103J	CHIP R 10K J 1/16W	
C36			CK73GB1H471K	CHIP C 470PF K		R816			RK73GB1J154J	CHIP R 150K J 1/16W	
C37			C93-0556-05	CHIP C 6.0PF D	K3	R817			RK73GB1J104J	CHIP R 100K J 1/16W	K2
C37,38			C93-0555-05	CHIP C 5.0PF C	K,K2	R817			RK73GB1J563J	CHIP R 56K J 1/16W	K3
C38			C93-0557-05	CHIP C 7.0PF D	K3	R817			RK73GB1J683J	CHIP R 68K J 1/16W	K
C41			C92-0719-05	ELECTRO 47UF 25WV	K3	R818			RK73GB1J103J	CHIP R 10K J 1/16W	
C42			CK73FB1H103K	CHIP C 0.010UF K	K3	R819			RK73GB1J222J	CHIP R 2.2K J 1/16W	
C801			C92-0514-05	CHIP-TAN 2.2UF 10WV		R820			RK73GB1J103J	CHIP R 10K J 1/16W	
C802			CK73GB1C104K	CHIP C 0.10UF K		R850			R92-0670-05	CHIP R 0 OHM	
C803			CK73GB1E103K	CHIP C 0.010UF K		VR1			R12-6429-05	TRIMMING POT. (100K)	
C804			CK73GB1H471K	CHIP C 470PF K		D1			DSA3A1-FK	DIODE	
C805			CK73GB1H102K	CHIP C 1000PF K		D2			22ZR-10D	SURGE ABSORBER	
C806			C92-0003-05	CHIP-TAN 0.47UF 25WV		D3			MA4PH633	DIODE	
C807			CK73GB1C104K	CHIP C 0.10UF K		D4,5			MI809	DIODE	
C808			C92-0040-05	CHIP-ELE 47UF 16WV		D4,5			XB15A709	DIODE	
C809-811			CK73GB1H102K	CHIP C 1000PF K		D6,7			HSM88AS	DIODE	
C812			CK73GB1E103K	CHIP C 0.010UF K		D801			02DZ5.6(X,Y)	ZENER DIODE	
C813			CK73GB1H102K	CHIP C 1000PF K		D802,803			1SS355	DIODE	
C814			CK73GB1H471K	CHIP C 470PF K	K3	IC1		*	RA45H4047M-31	MOS-IC	K3
C816			CK73GB1H122K	CHIP C 1200PF K	K3	IC1		*	RA45H4452M-31	MOS-IC	K,K2
C817,818			CC73GCH1H101J	CHIP C 100PF J		IC801,802			OP291GS	BI-POLAR IC	
C822			C92-0004-05	CHIP-TAN 1.0UF 16WV	K3	Q801			2SC4116(Y)	TRANSISTOR	

TK-890/890(B)/890H(B)

PARTS LIST

FINAL UNIT (X45-3570-10) : TK-890H(B)

Ref. No.	Address	New parts	Parts No.	Description	Destination
FINAL UNIT (X45-3570-10) : TK-890H(B)					
C3			CK73FB1H471K	CHIP C 470PF K	
C5			CK73GB1H471K	CHIP C 470PF K	
C8			CK73FB1E104K	CHIP C 0.10UF K	
C11			CK73FB1H471K	CHIP C 470PF K	
C14			CK73FB1H471K	CHIP C 470PF K	
C15			CM73F2H101J	CHIP C 100PF J	
C17			C92-0726-05	CHIP-ELE 47UF 25WV	
C19			CM73F2H200J	CHIP C 20PF J	
C20,21			CM73F2H101J	CHIP C 100PF J	
C22			CC73FCH1H101J	CHIP C 100PF J	
C23			CK73FB1H102K	CHIP C 1000PF K	
C24			CK73FB1E104K	CHIP C 0.10UF K	
C26			C93-0599-05	CHIP C 470PF K	
C28-31			CM73F2H390J	CHIP C 39PF J	
C32-35			CM73F2H300J	CHIP C 30PF J	
C37-40			CM73F2H080D	CHIP C 8.0PF D	
C41,42			CK73FB1H471K	CHIP C 470PF K	
C43,44			CM73F2H560J	CHIP C 56PF J	
C45,46			CK73FB1H103K	CHIP C 0.010UF K	
C47			CM73F2H120J	CHIP C 12PF J	
C48,49			CK73FB1E104K	CHIP C 0.10UF K	
C50,51			C90-5299-05	ELECTRO 470UF 25WV	
C52			CK73FB1H471K	CHIP C 470PF K	
C53			CC73FCH1H060D	CHIP C 6.0PF D	
C54			CK73FB1H471K	CHIP C 470PF K	
C56,57			CK73FB1H471K	CHIP C 470PF K	
C61			CK73FB1H471K	CHIP C 470PF K	
C62			CM73F2H050D	CHIP C 5.0PF D	
C63			C92-0729-05	CHIP-ELE 330UF 25WV	
C64			CM73F2H150J	CHIP C 15PF J	
C65,66			CK73FB1H471K	CHIP C 470PF K	
C67			CM73F2H180J	CHIP C 18PF J	
C68			C92-0729-05	CHIP-ELE 330UF 25WV	
C69			CM73F2H090D	CHIP C 9.0PF D	
C70,71			CK73FB1H471K	CHIP C 470PF K	
C72			CM73F2H090D	CHIP C 9.0PF D	
C73			CM73F2H050D	CHIP C 5.0PF D	
C74			CC73FCH1H101J	CHIP C 100PF J	
C75			CK73FB1H102K	CHIP C 1000PF K	
C76			CK73FB1E104K	CHIP C 0.10UF K	
C78			C93-0599-05	CHIP C 470PF K	
C102			CC73FCH1H220J	CHIP C 22PF J	
C901			C92-0606-05	CHIP-TAN 4.7UF 10WV	
C902			CK73GB1C104K	CHIP C 0.10UF K	
C903			CK73GB1E103K	CHIP C 0.010UF K	
C904			CK73GB1H471K	CHIP C 470PF K	
C905			CK73GB1H102K	CHIP C 1000PF K	
C906			C92-0003-05	CHIP-TAN 0.47UF 25WV	
C907			CK73GB1C104K	CHIP C 0.10UF K	
C908			CK73GB1H102K	CHIP C 1000PF K	
C909			C92-0040-05	CHIP-ELE 47UF 16WV	
C910			CK73FB1H102K	CHIP C 1000PF K	
C911			CK73GB1H102K	CHIP C 1000PF K	
C912			CK73GB1H471K	CHIP C 470PF K	
C913			CK73GB1H102K	CHIP C 1000PF K	
C916			CK73GB1H471K	CHIP C 470PF K	
CN1,2			E04-0154-05	PIN SOCKET	
CN3,4			E23-1116-05	RELAY TERMINAL	
W1,2			E37-0183-05	PROCESSED LEAD WIRE	
W4			E37-0706-05	LEAD WIRE WITH CONNECTOR	
W5			E37-0701-05	LEAD WIRE WITH CONNECTOR	
A1			F10-2277-04	SHIELDING PLATE	
L1,2		*	L33-1470-05	CHOKE COIL	
L3,4			L34-1233-05	AIR-CORE COIL	
L5			L34-4537-05	AIR-CORE COIL	
L6,7			L34-4538-05	AIR-CORE COIL	
L8			L34-1236-05	AIR-CORE COIL	
L9			L40-6871-34	SMALL FIXED INDUCTOR (68NH)	
R1			RK73GB1J473J	CHIP R 47K J 1/16W	
R2			RK73GB1J104J	CHIP R 100K J 1/16W	
R3			RK73GB1J471J	CHIP R 470 J 1/16W	
R4			RK73GB1J122J	CHIP R 1.2K J 1/16W	
R5			RK73GB1J392J	CHIP R 3.9K J 1/16W	
R9		*	R92-1210-05	CHIP R 180 J 1/4W	
R10			R92-1206-05	CHIP R 150 J 1/4W	
R12			RK73FB2A122J	CHIP R 1.2K J 1/10W	
R13			RK73FB2A103J	CHIP R 10K J 1/10W	
R14			RK73FB2A330J	CHIP R 33 J 1/10W	
R15			RK73FB2A331J	CHIP R 330 J 1/10W	
R16			RK73FB2A330J	CHIP R 33 J 1/10W	
R17			RK73FB2A331J	CHIP R 330 J 1/10W	
R19			RK73FB2A221J	CHIP R 220 J 1/10W	
R20			RK73FB2A101J	CHIP R 100 J 1/10W	
R21			R92-1061-05	JUMPER REST 0 OHM	
R22			RK73FB2A823J	CHIP R 82K J 1/10W	
R23			RK73FB2A333J	CHIP R 33K J 1/10W	
R24		*	R92-2171-05	CHIP R 6.8K 1/2W	
R25			RK73FB2A823J	CHIP R 82K J 1/10W	
R26			RK73FB2A333J	CHIP R 33K J 1/10W	
R27		*	R92-2171-05	CHIP R 6.8K 1/2W	
R28			R92-0670-05	CHIP R 0 OHM	
R901			RK73GB1J822J	CHIP R 8.2K J 1/16W	
R902-904			RK73GB1J102J	CHIP R 1.0K J 1/16W	
R905			RK73GB1J103J	CHIP R 10K J 1/16W	
R906			RK73GB1J182J	CHIP R 1.8K J 1/16W	
R907,908			RK73GB1J104J	CHIP R 100K J 1/16W	
R909			RK73GB1J103J	CHIP R 10K J 1/16W	
R910			RK73GB1J153J	CHIP R 15K J 1/16W	
R911			RK73GB1J393J	CHIP R 39K J 1/16W	
R912			RK73GB1J273J	CHIP R 27K J 1/16W	
R913			RK73GB1J272J	CHIP R 2.7K J 1/16W	
R914,915			RK73GB1J103J	CHIP R 10K J 1/16W	
R916			RK73GB1J154J	CHIP R 150K J 1/16W	
R917			RK73GB1J563J	CHIP R 56K J 1/16W	
R918			RK73GB1J103J	CHIP R 10K J 1/16W	
R919			RK73GB1J332J	CHIP R 3.3K J 1/16W	
R920			RK73GB1J103J	CHIP R 10K J 1/16W	
VR1			R12-6429-05	TRIMMING POT. (100K)	
K1			S51-1437-05	RELAY	
D1,2			HSM88AS	DIODE	
D4			1SS193	DIODE	
D5			O2CZ10(X,Y)	ZENER DIODE	
D6			ZSA5A27	ZENER DIODE	
D7			SG-5L(R)	DIODE	

PARTS LIST

FINAL UNIT (X45-3570-10) : TK-890H(B)

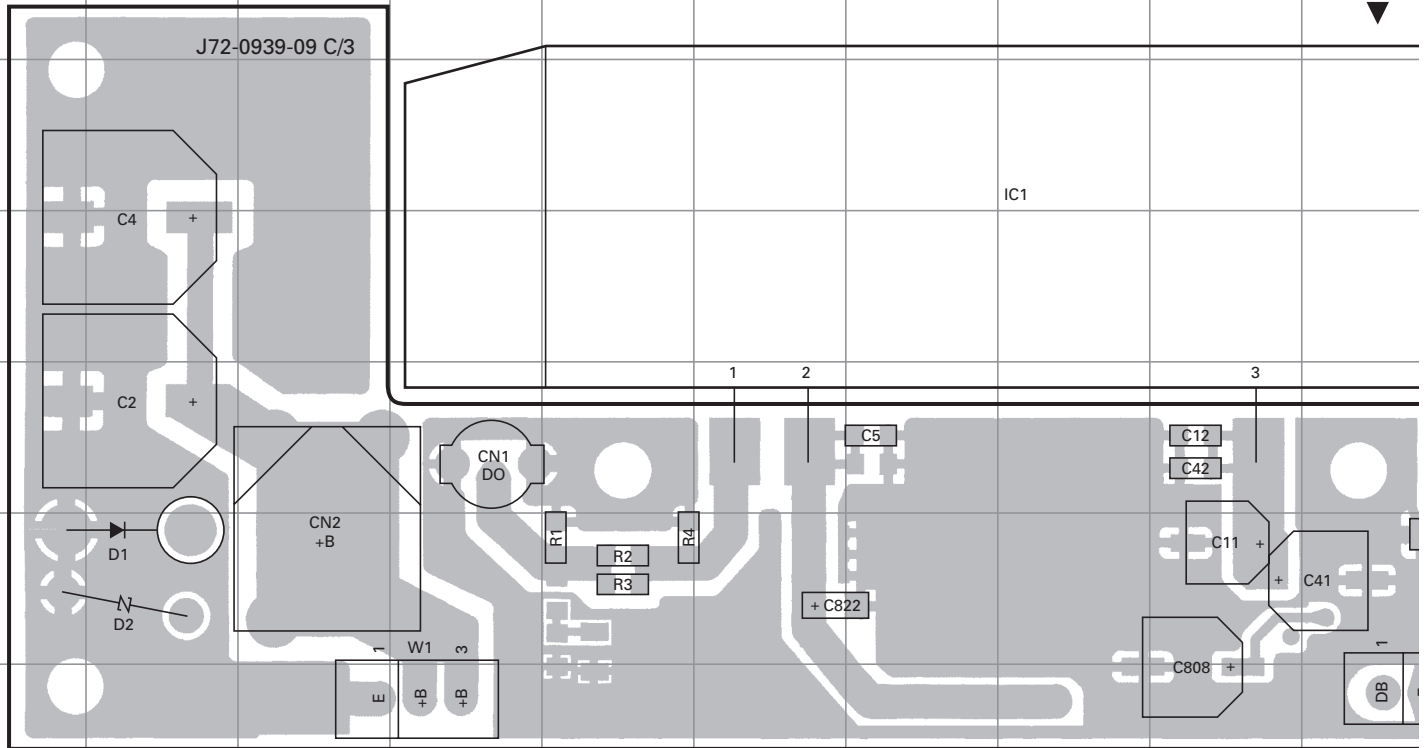
Ref. No.	Address	New parts	Parts No.	Description	Destination	Ref. No.	Address	New parts	Parts No.	Description	Destination
D901			UDZS4.3B	ZENER DIODE							
D902-904			1SS355	DIODE							
IC1		*	RA45H4452M-31	MOS-IC							
IC901,902			OP291GS	BI-POLAR IC							
Q1,2			2SC2712(Y)	TRANSISTOR							
Q6,7			RD60HUF1-01	FET							
Q8			FMC2	DIGITAL TRANSISTOR							
Q9			2SD1624(S)	TRANSISTOR							
Q901			2SC4116(Y)	TRANSISTOR							
TH1		*	PTFM04BD47102N	THERMISTOR							
-			212-0702-05	INSULATING TUBE							

TK-890/890(B) PC BOARD

FINAL UNIT (X57-5620-XX) (C/3)

-10 : TK-890/890(B) K -11 : TK-890(B) K2 -12 : TK-890(B) K3

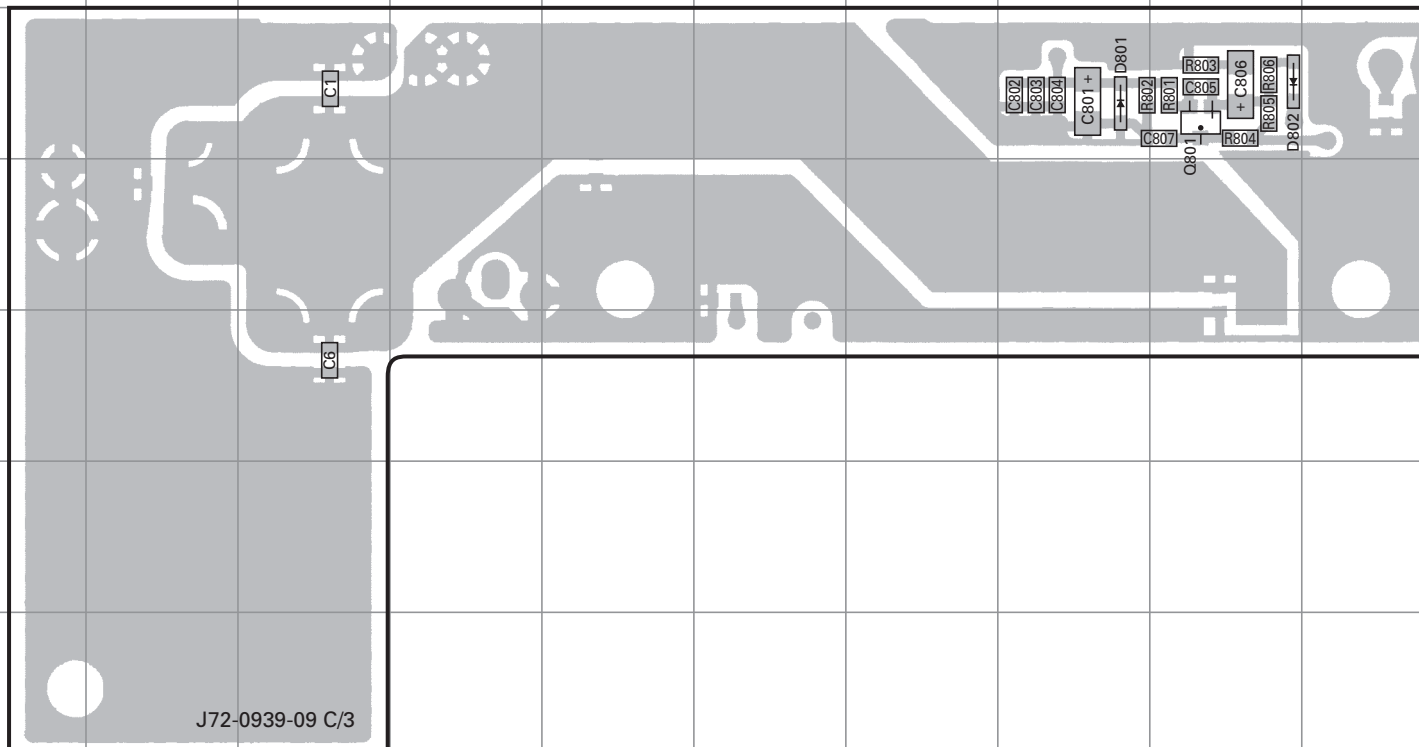
Component side view (J72-0939-09 C/3)



FINAL UNIT (X57-5620-XX) (C/3)

-10 : TK-890/890(B) K -11 : TK-890(B) K2 -12 : TK-890(B) K3

Foil side view (J72-0939-09 C/3)

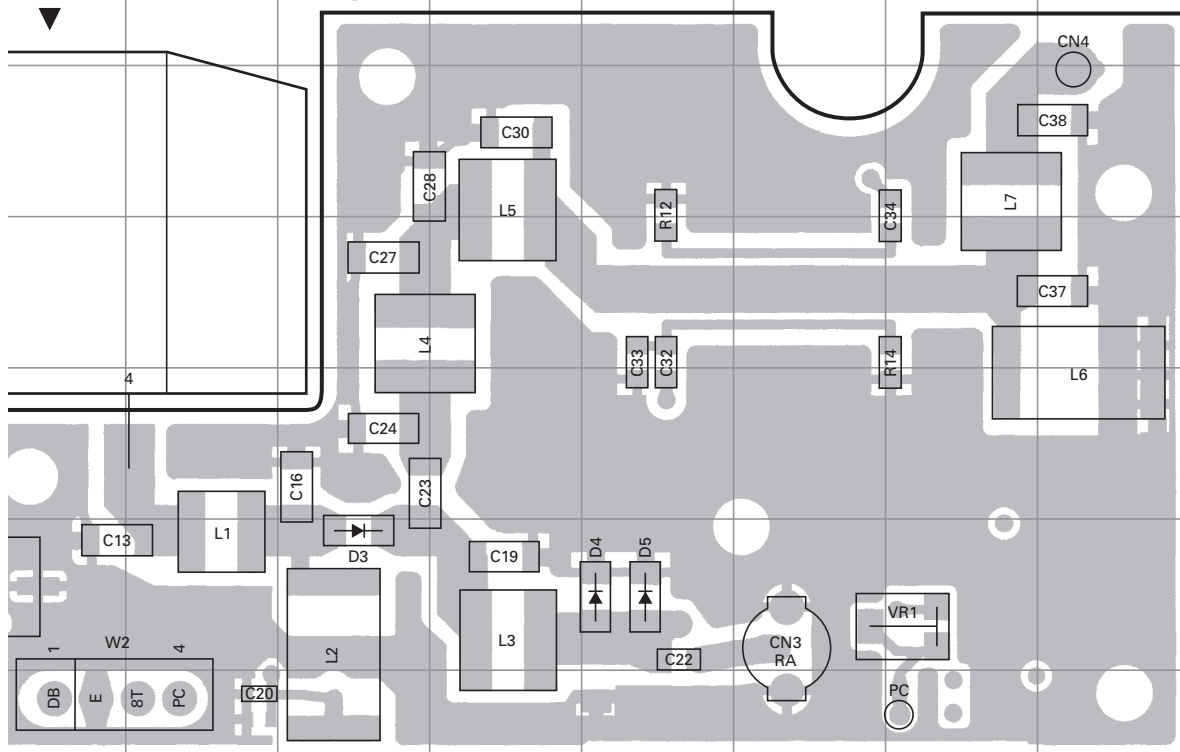


PC BOARD TK-890/890(B)

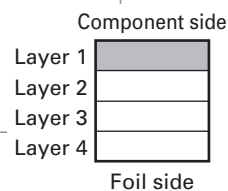
FINAL UNIT (X57-5620-XX) (C/3)

-10 : TK-890/890(B) K -11 : TK-890(B) K2 -12 : TK-890(B) K3

Component side view (J72-0939-09 C/3)



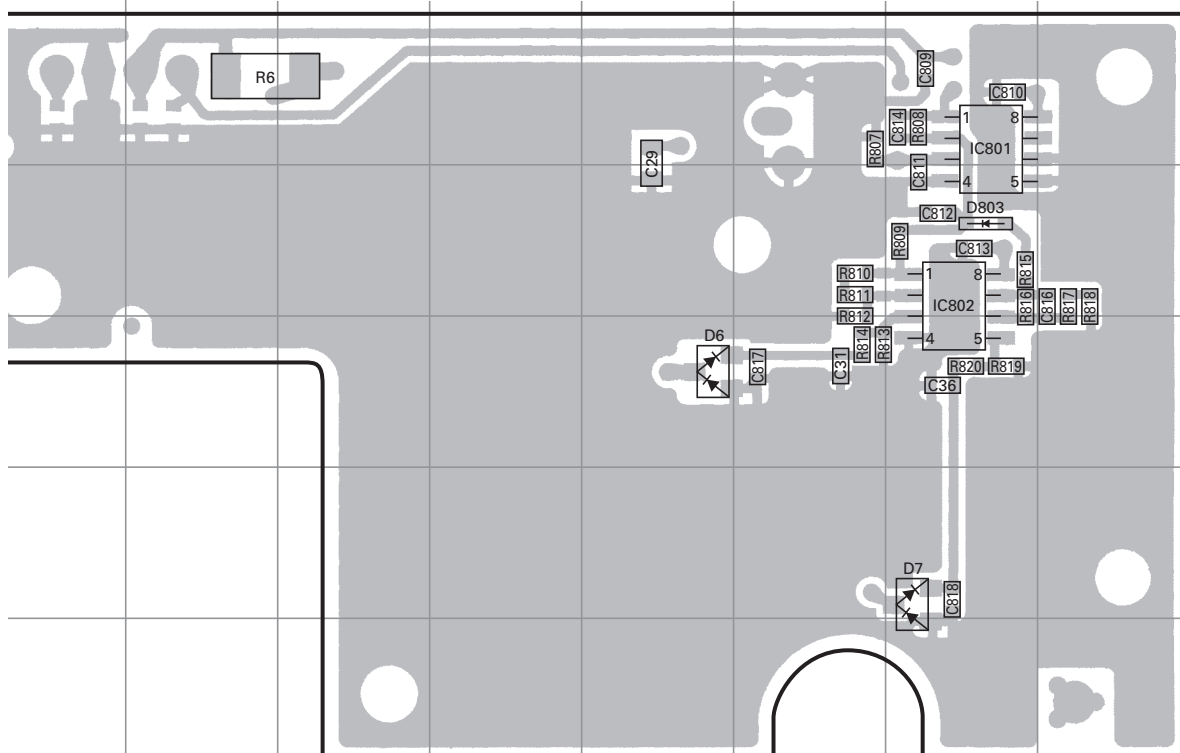
Ref. No.	Address
IC1	3H
D1	6B
D2	6B
D3	6L
D4	6N
D5	6N



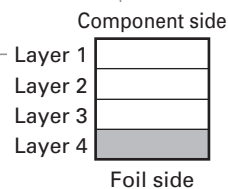
FINAL UNIT (X57-5620-XX) (C/3)

-10 : TK-890/890(B) K -11 : TK-890(B) K2 -12 : TK-890(B) K3

Foil side view (J72-0939-09 C/3)



Ref. No.	Address
IC801	9P
IC802	10P
Q801	9I
D6	11N
D7	12P
D801	9H
D802	9I
D803	10P

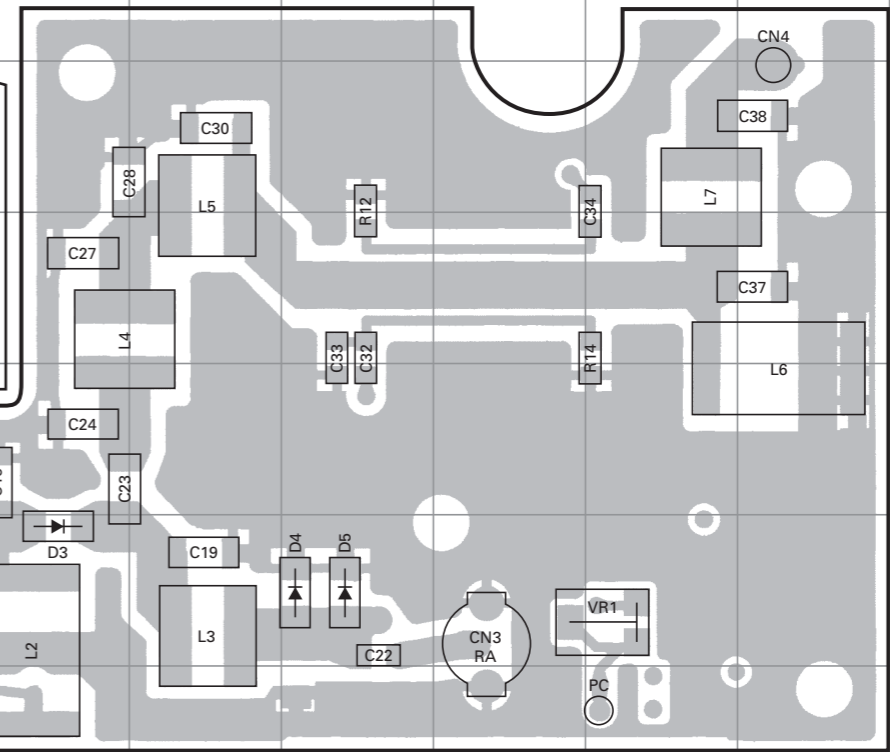
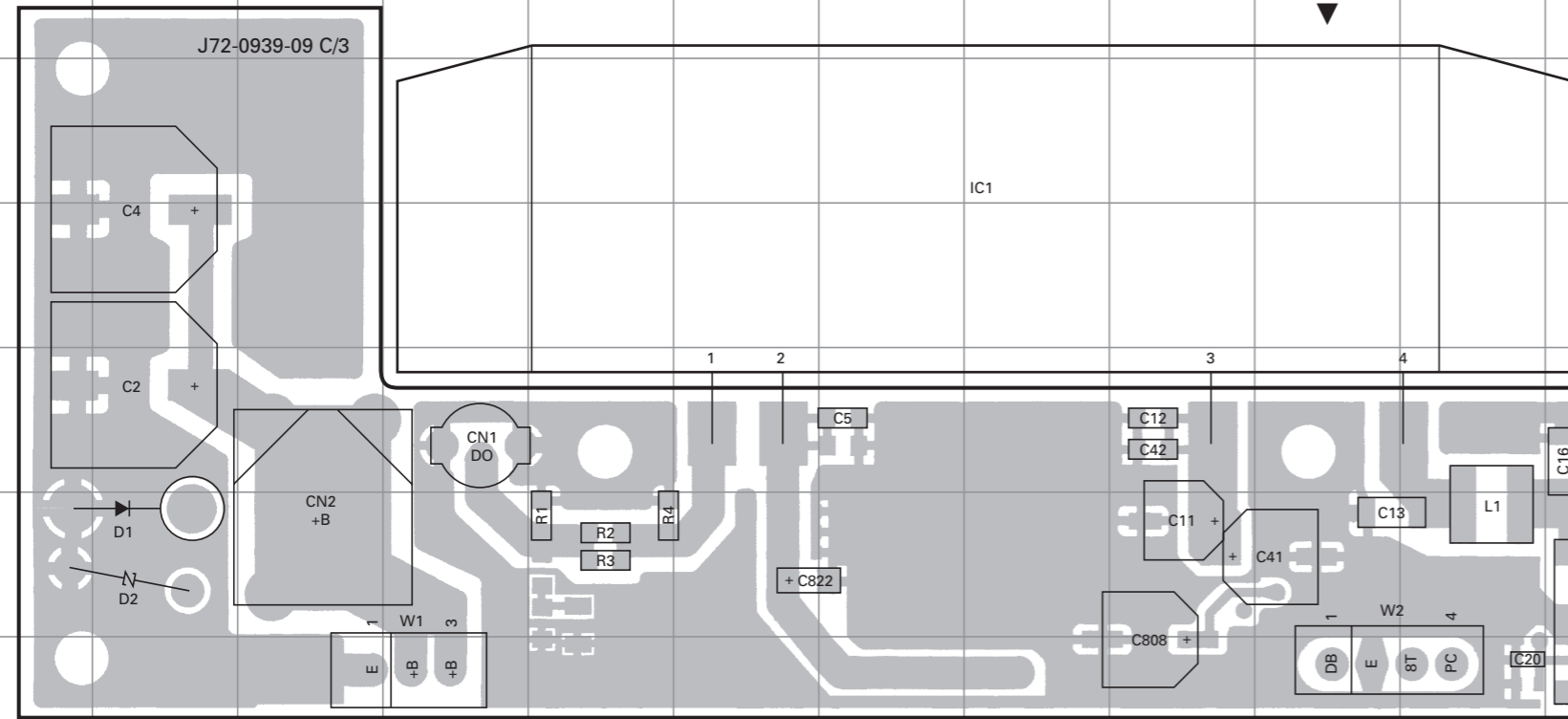


TK-890/890(B) PC BOARD

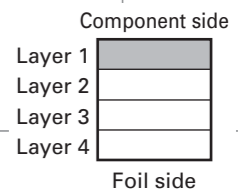
PC BOARD TK-890/890(B)

FINAL UNIT (X57-5620-XX) (C/3)
-10 : TK-890/890(B) K -11 : TK-890(B) K2 -12 : TK-890(B) K3
Component side view (J72-0939-09 C/3)

FINAL UNIT (X57-5620-XX) (C/3)
-10 : TK-890/890(B) K -11 : TK-890(B) K2 -12 : TK-890(B) K3
Component side view (J72-0939-09 C/3)

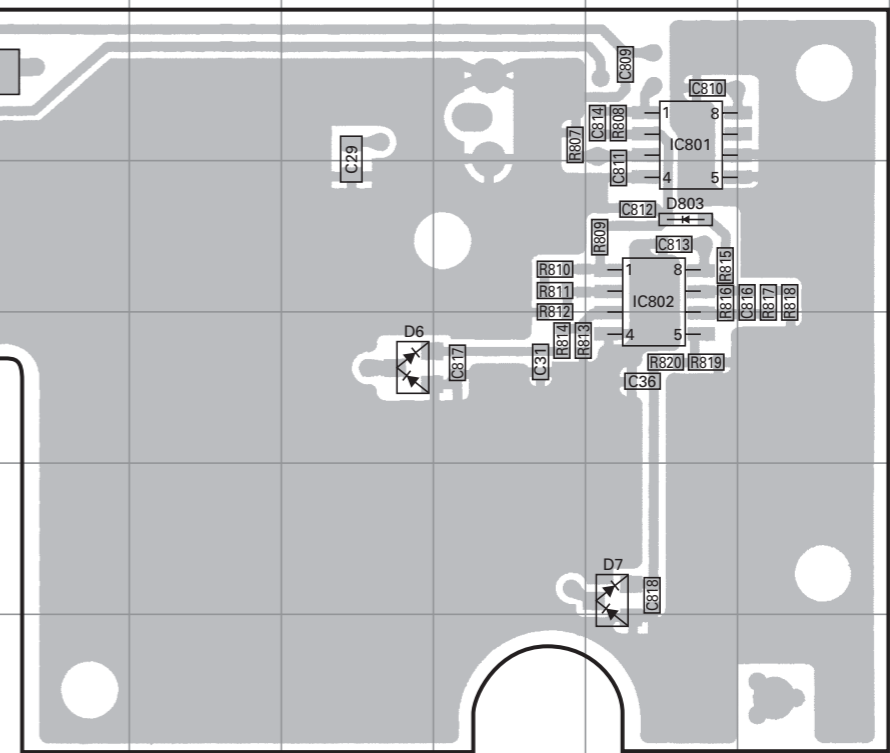
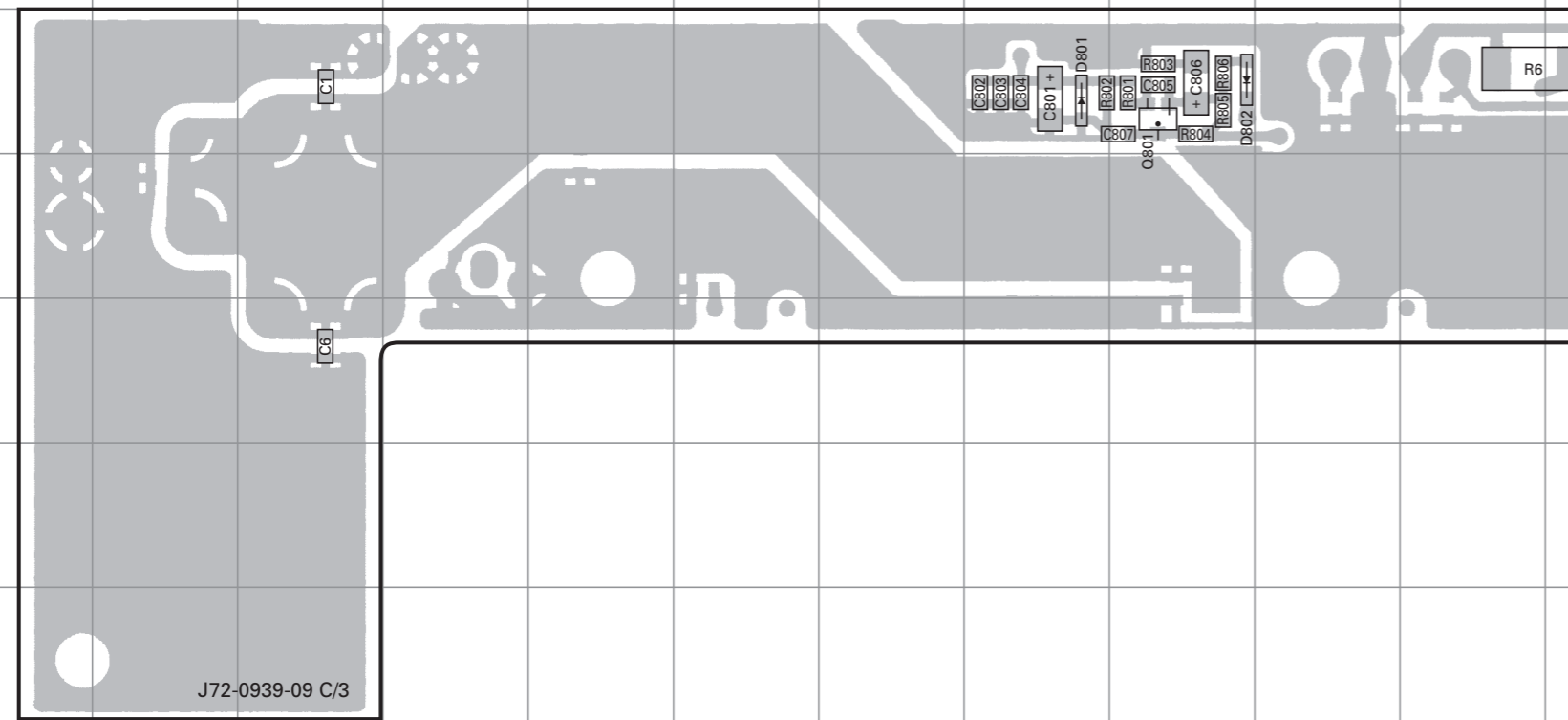


Ref. No.	Address
IC1	3H
D1	6B
D2	6B
D3	6L
D4	6N
D5	6N

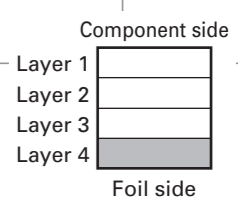


FINAL UNIT (X57-5620-XX) (C/3)
-10 : TK-890/890(B) K -11 : TK-890(B) K2 -12 : TK-890(B) K3
Foil side view (J72-0939-09 C/3)

FINAL UNIT (X57-5620-XX) (C/3)
-10 : TK-890/890(B) K -11 : TK-890(B) K2 -12 : TK-890(B) K3
Foil side view (J72-0939-09 C/3)

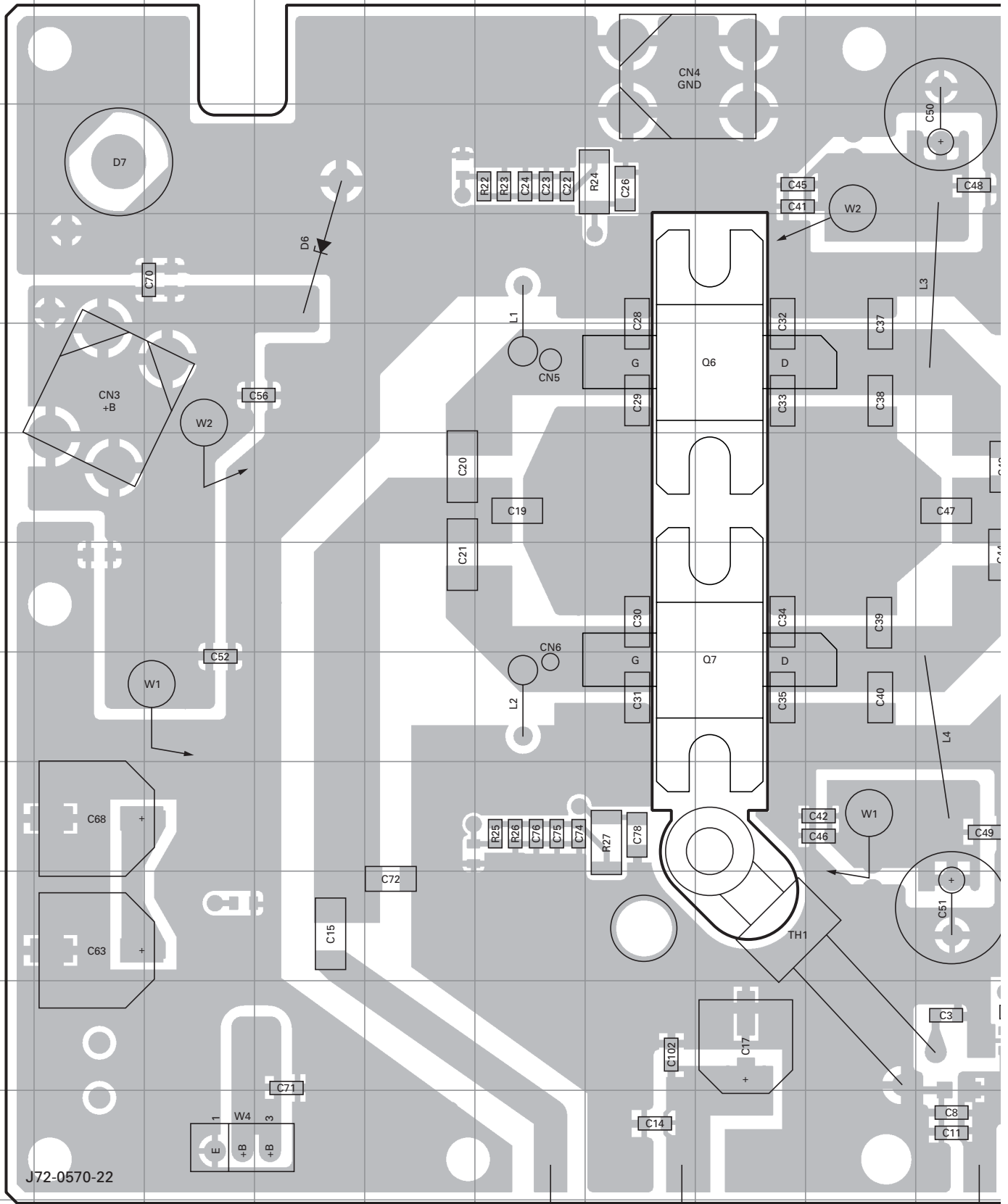


Ref. No.	Address
IC801	9P
IC802	10P
Q801	9I
D6	11N
D7	12P
D801	9H
D802	9I
D803	10P

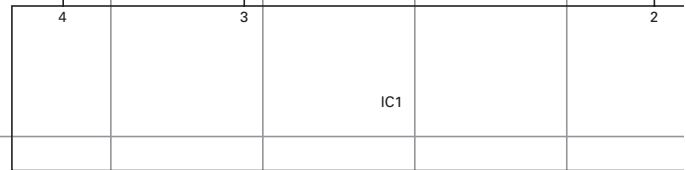
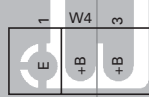


TK-890H(B) PC BOARD

FINAL UNIT (X45-3570-10) Component side view (J72-0570-22)

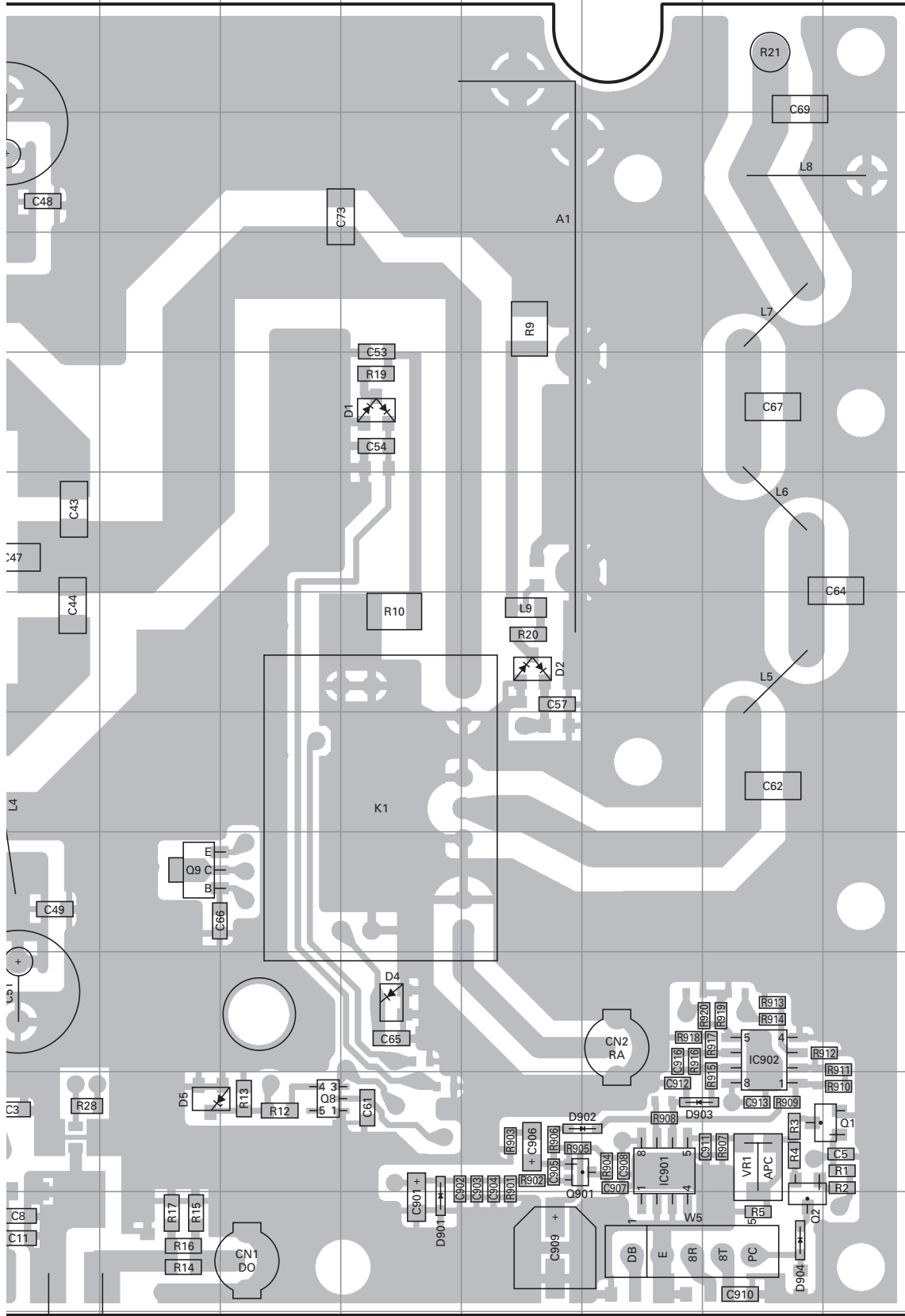


J72-0570-22

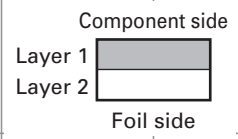


PC BOARD TK-890H(B)

FINAL UNIT (X45-3570-10) Component side view (J72-0570-22)



Ref. No.	Address
IC1	13H
IC901	11O
IC902	10P
Q1	11Q
Q2	12P
Q6	5H
Q7	8H
Q8	11L
Q9	9K
Q901	11N
D1	5M
D2	7N
D4	10M
D5	11K
D6	4D
D7	3B
D901	12M
D902	11O
D903	11O
D904	12P

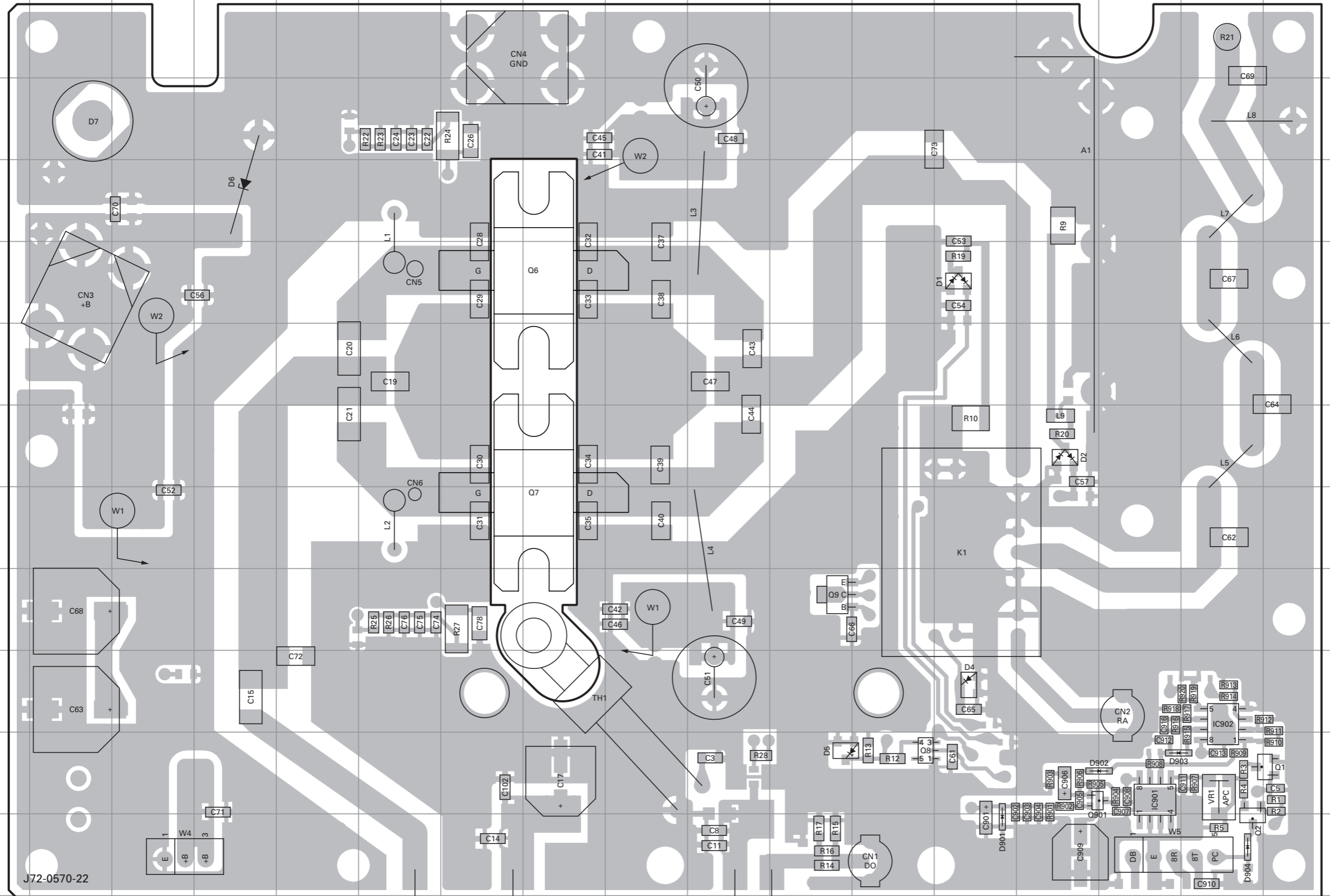


TK-890H(B) PC BOARD

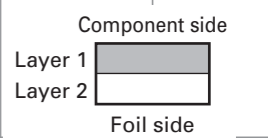
PC BOARD TK-890H(B)

FINAL UNIT (X45-3570-10) Component side view (J72-0570-22)

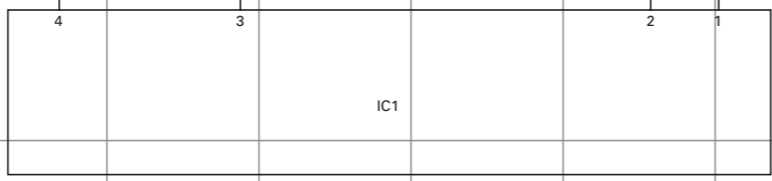
FINAL UNIT (X45-3570-10) Component side view (J72-0570-22)



Ref. No.	Address
IC1	13H
IC901	11O
IC902	10P
Q1	11Q
Q2	12P
Q6	5H
Q7	8H
Q8	11L
Q9	9K
Q901	11N
D1	5M
D2	7N
D4	10M
D5	11K
D6	4D
D7	3B
D901	12M
D902	11O
D903	11O
D904	12P



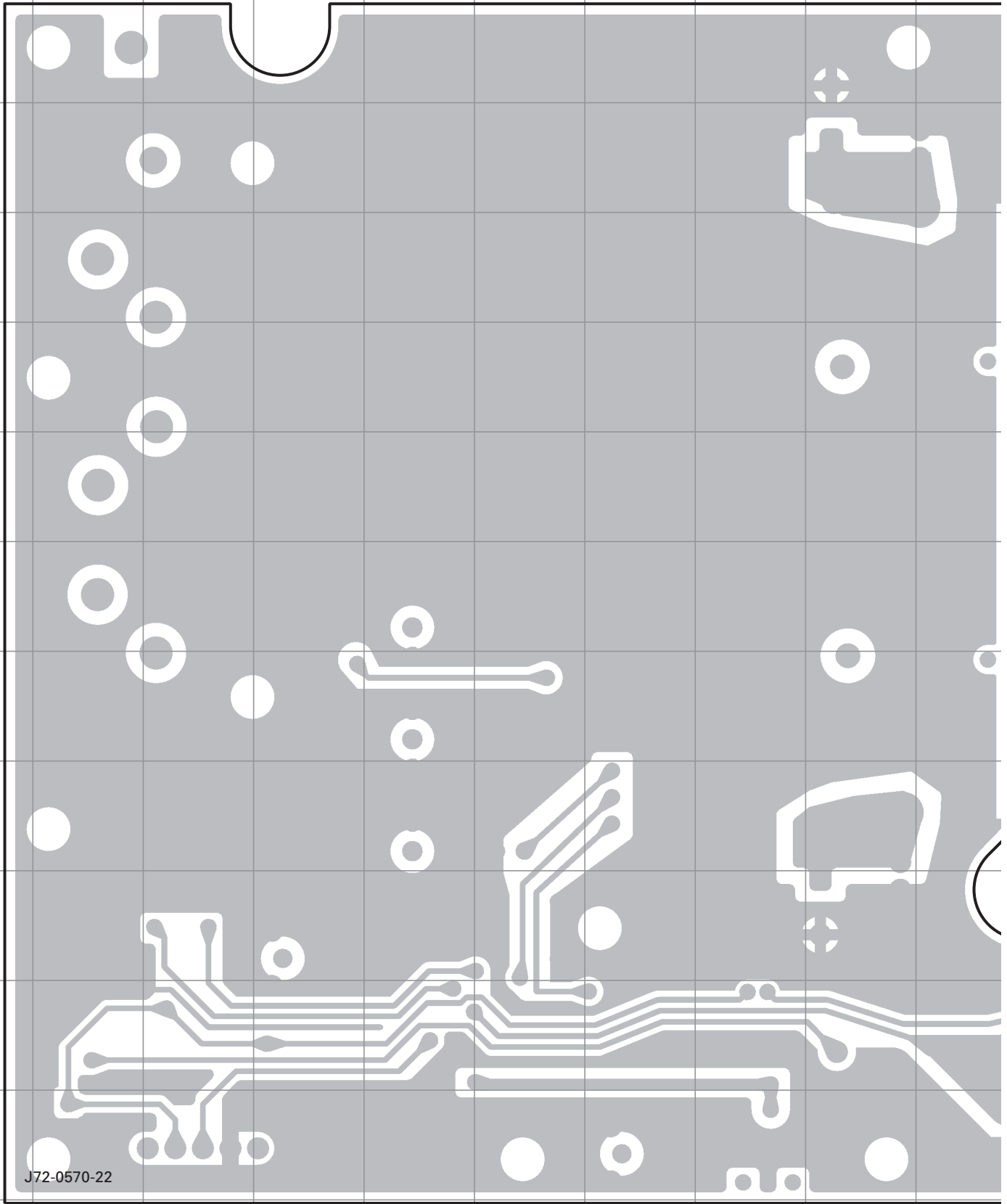
J72-0570-22



A B C D E F G H I J

TK-890H(B) PC BOARD

FINAL UNIT (X45-3570-10) Foil side view (J72-0570-22)

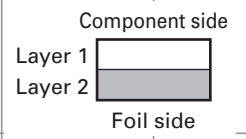
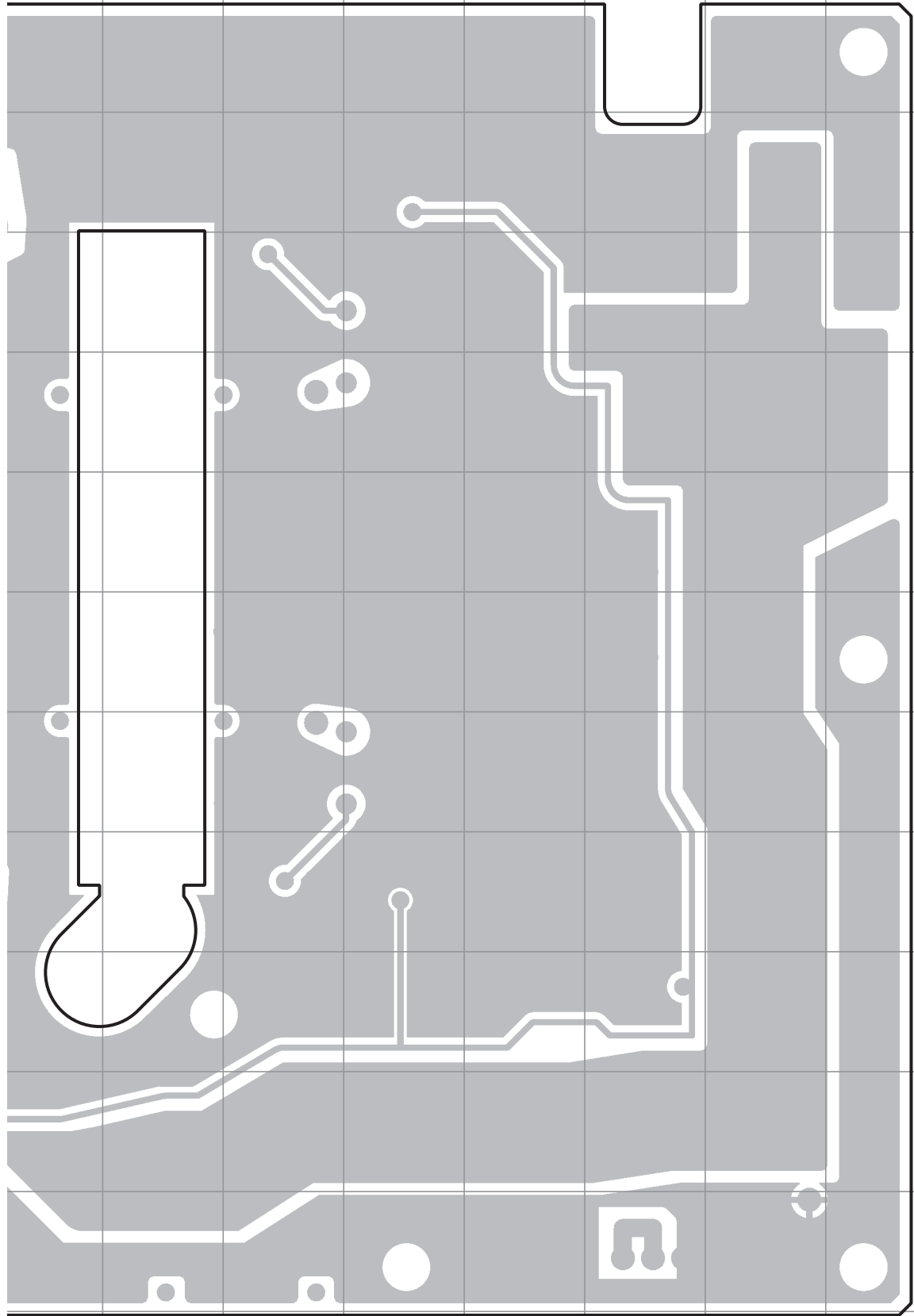


J72-0570-22



PC BOARD TK-890H(B)

FINAL UNIT (X45-3570-10) Foil side view (J72-0570-22)

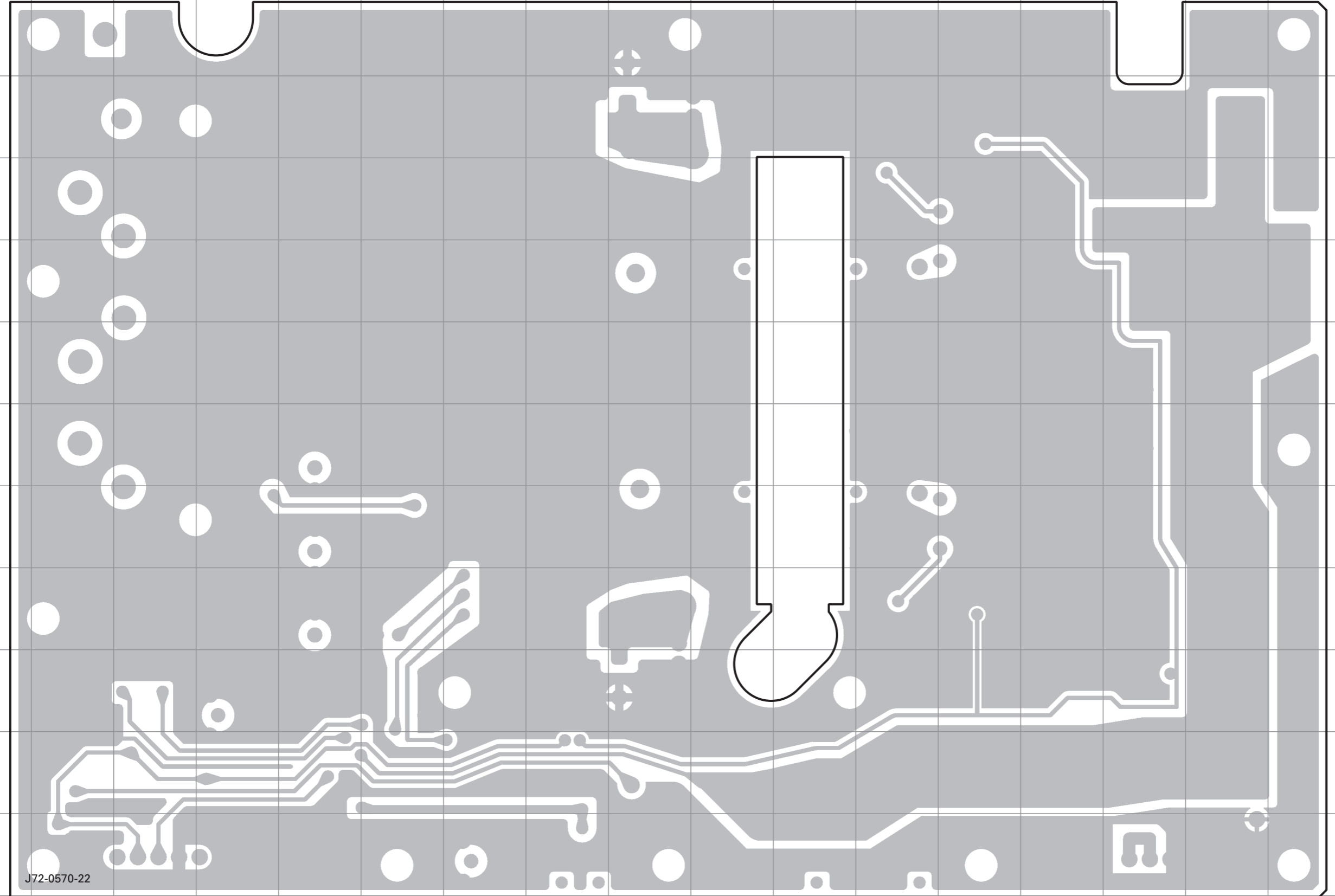


TK-890H(B) PC BOARD

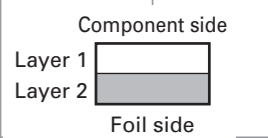
PC BOARD TK-890H(B)

FINAL UNIT (X45-3570-10) Foil side view (J72-0570-22)

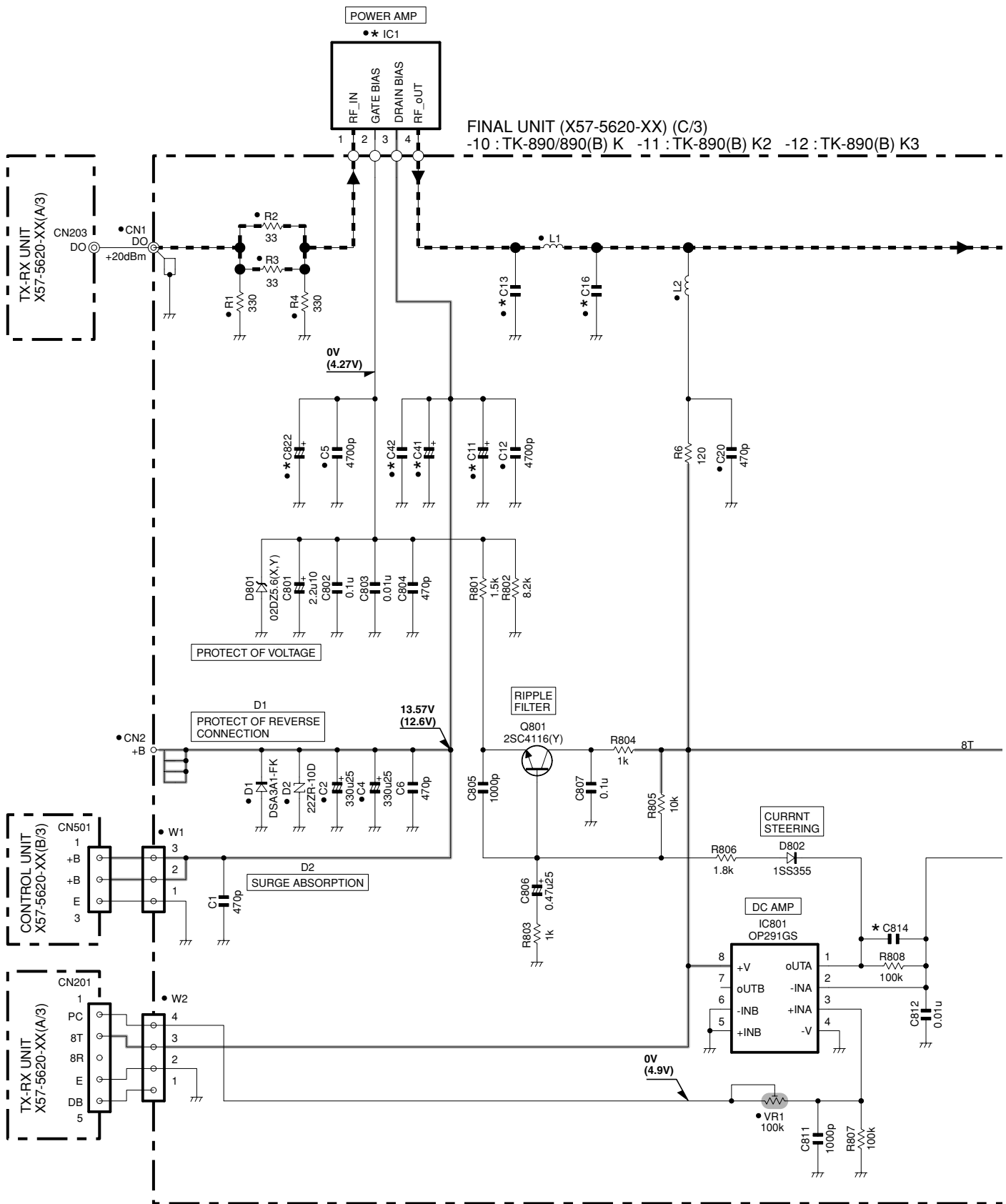
FINAL UNIT (X45-3570-10) Foil side view (J72-0570-22)



J72-0570-22

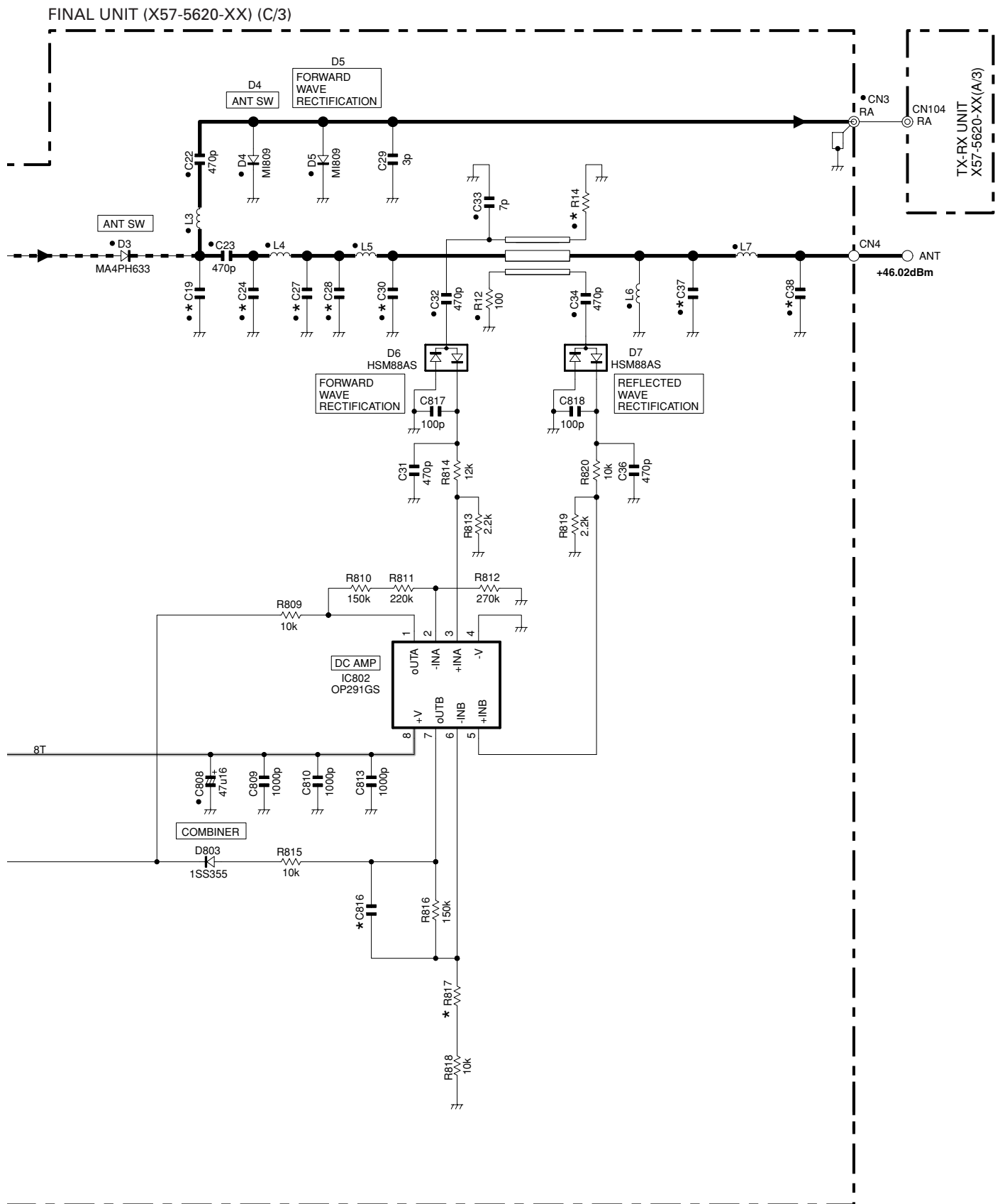


TK-890/890(B) SCHEMATIC DIAGRAM



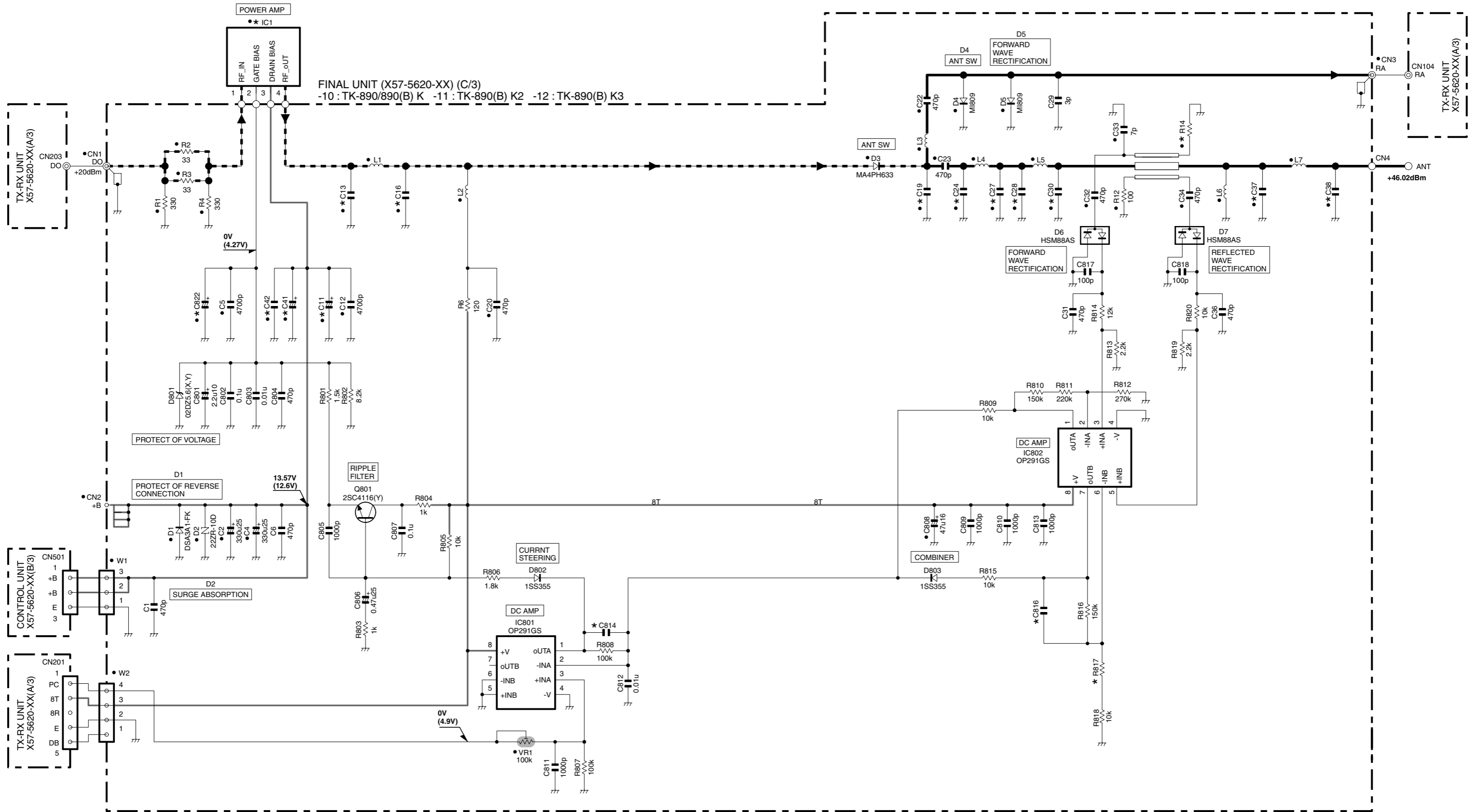
	X57-5620-XX(C/3)	C11	C13	C16	C41	C42	C814	C822	IC1
-10	TK-890/890(B) K	10u35	NO	2p	NO	NO	NO	NO	RA45H4452M-31
-11	TK-890(B) K2	10u35	6p	7p	NO	NO	NO	NO	RA45H4452M-31
-12	TK-890(B) K3	NO	NO	3p	47u25	0.01u	470p	1u16	RA45H4047M-31

SCHEMATIC DIAGRAM TK-890/890(B)



	X57-5620-XX(C/3)	C19	C24	C27	C28	C30	C37	C38	C816	R14	R817
-10	TK-890/890(B)	K	4p	4p	5p	5p	5p	5p	NO	100	68k
-11	TK-890(B)	K2	3p	4p	3p	5p	4p	5p	NO	100	100k
-12	TK-890(B)	K3	5p	6p	7p	7p	6p	7p	1200p	82	56k

Note : The components marked with a dot (•) are parts of layer 1.

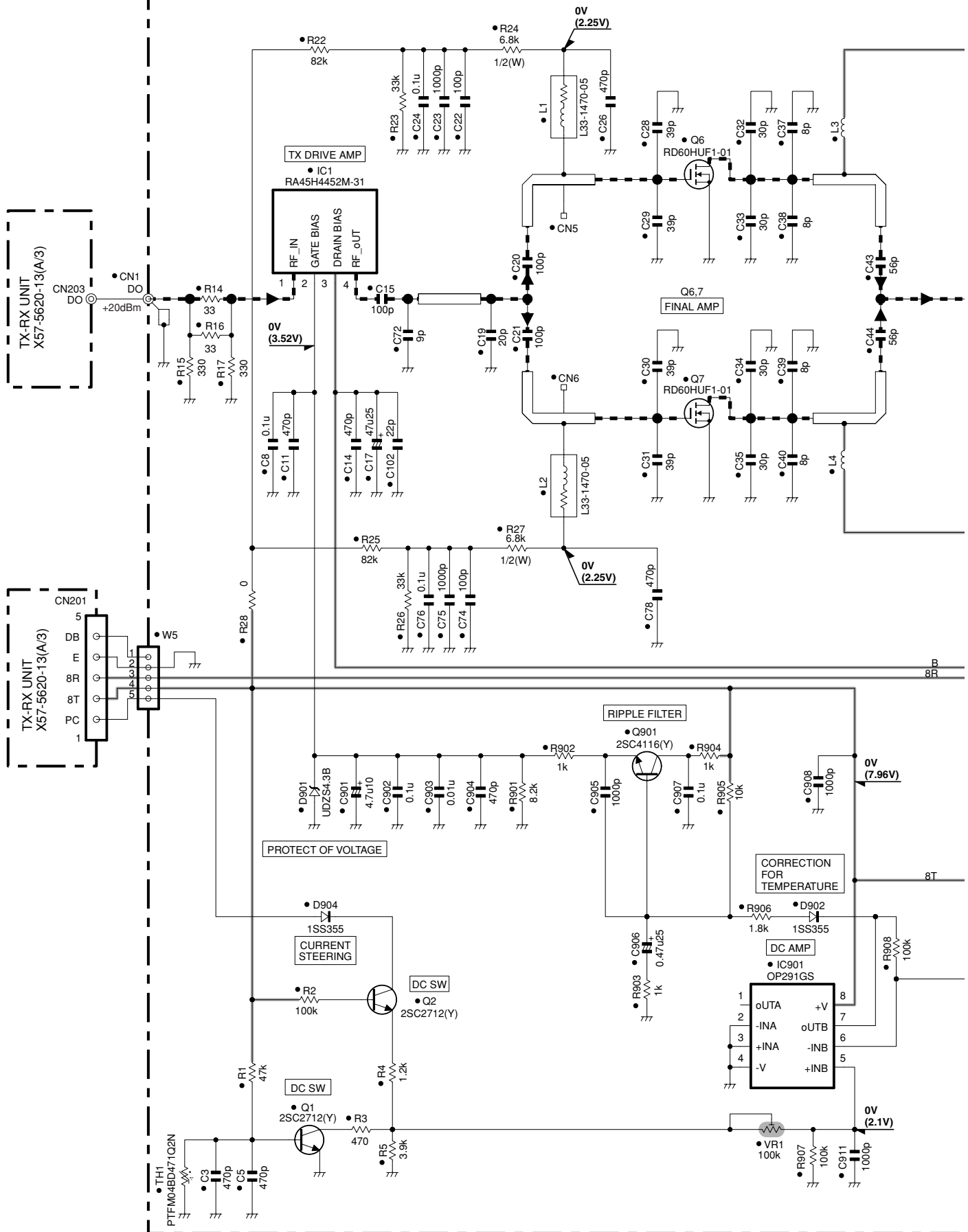


X57-5620-XX(C/3)		C11	C13	C16	C41	C42	C814	C822	IC1
-10	TK-890/890(B) K	10u35	NO	2p	NO	NO	NO	NO	RA45H4452M-31
-11	TK-890(B) K2	10u35	6p	7p	NO	NO	NO	NO	RA45H4452M-31
-12	TK-890(B) K3	NO	NO	3p	47u25	0.01u	470p	1u16	RA45H4047M-31

X57-5620-XX(C/3)		C19	C24	C27	C28	C30	C37	C38	C816	R14	R817
-10	TK-890/890(B) K	4p	4p	5p	5p	5p	5p	5p	NO	100	68k
-11	TK-890(B) K2	3p	4p	3p	5p	4p	5p	5p	NO	100	100k
-12	TK-890(B) K3	5p	6p	7p	7p	6p	6p	7p	1200p	82	56k

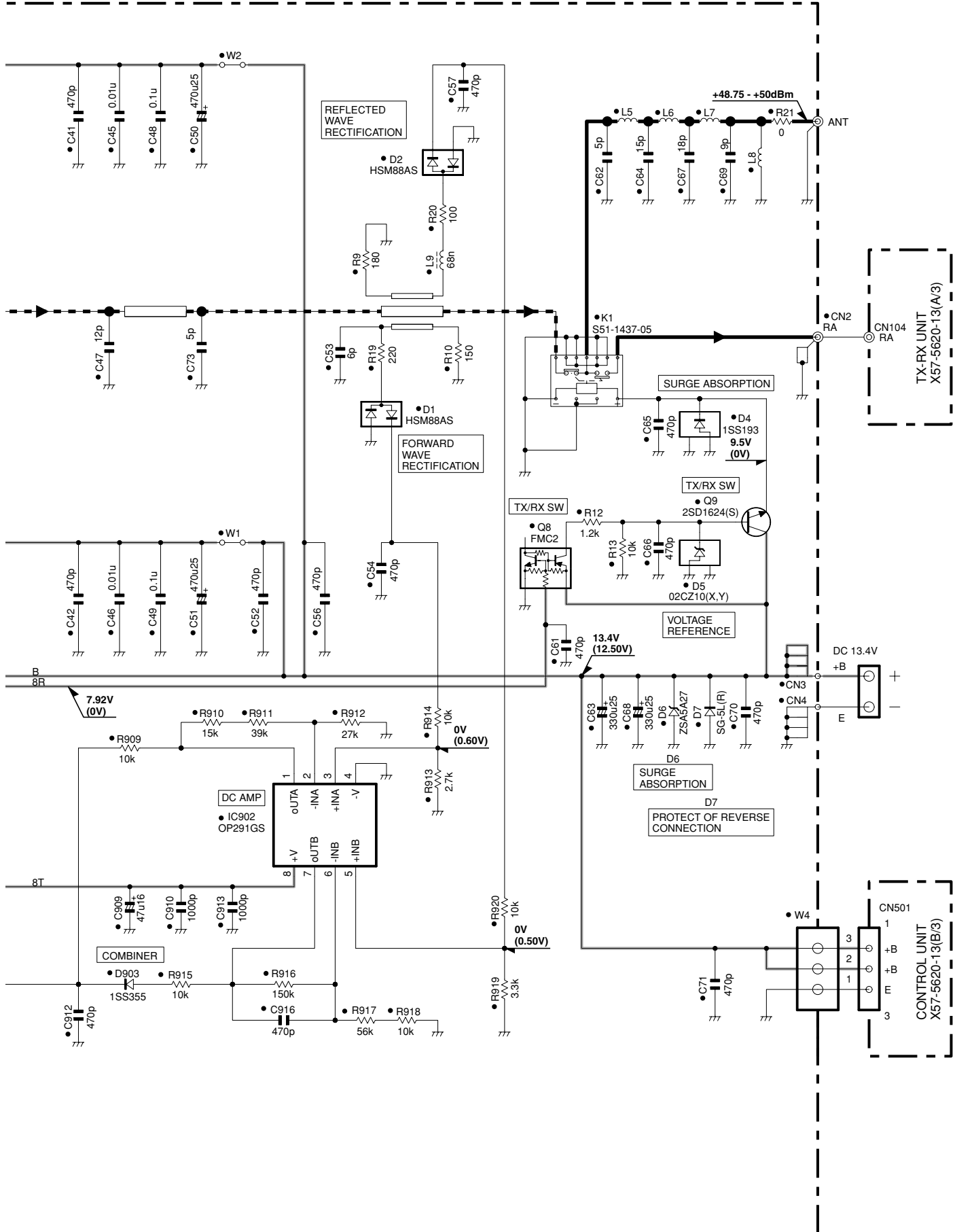
TK-890H(B) SCHEMATIC DIAGRAM

FINAL UNIT (X45-3570-10) :TK-890H(B) K



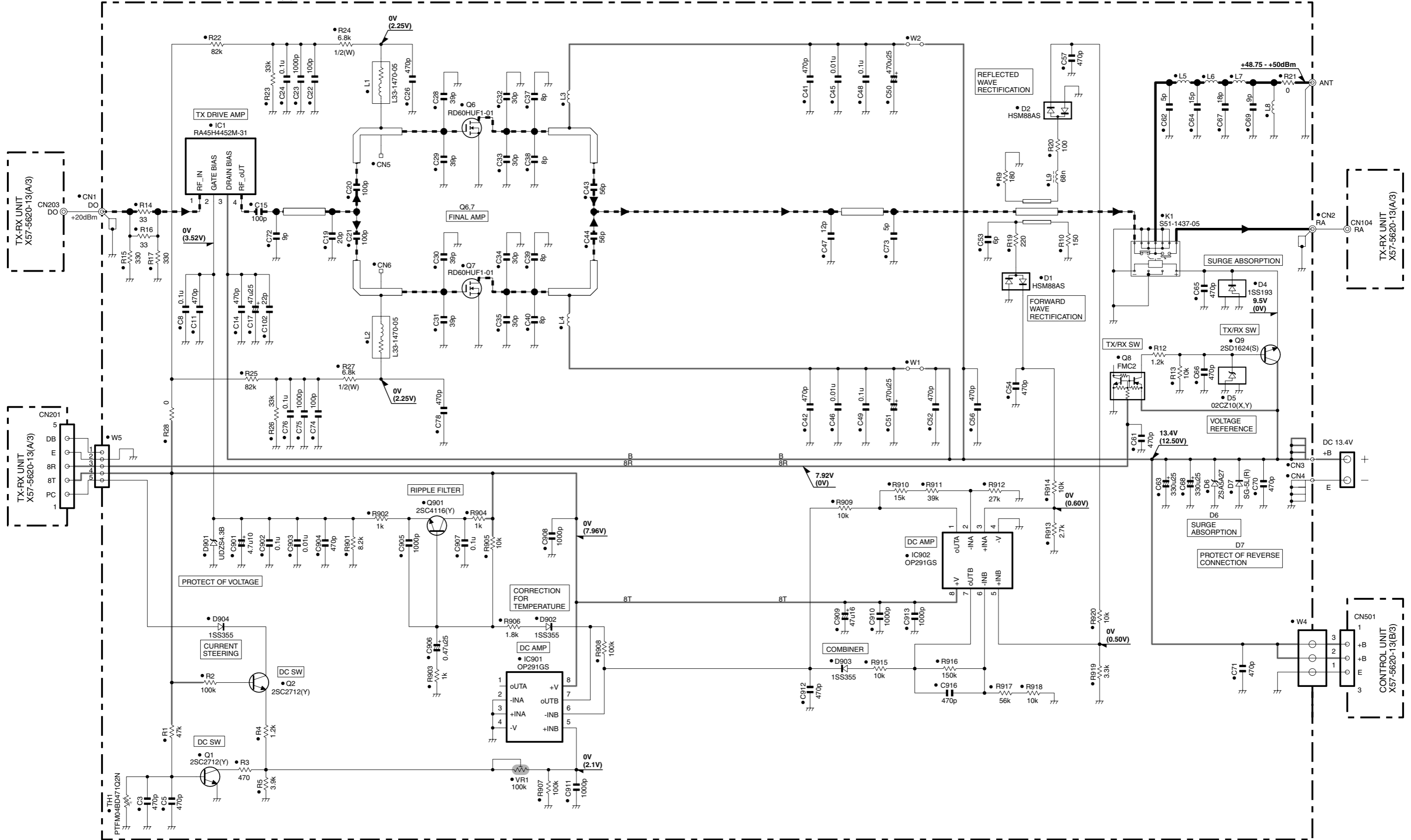
SCHEMATIC DIAGRAM TK-890H(B)

FINAL UNIT (X45-3570-10)



Note : The components marked with a dot (•) are parts of layer 1.

FINAL UNIT (X45-3570-10) :TK-890H(B) K



TK-890/890(B)/890H(B)

Kenwood Corporation

2967-3, Ishikawa-machi, Hachioji-shi, Tokyo, 192-8525 Japan

Kenwood U.S.A. Corporation

P.O. BOX 22745, 2201 East Dominguez Street, Long Beach, CA 90801-5745, U.S.A.

Kenwood Electronics Canada Inc.

6070 Kestrel Road, Mississauga, Ontario, Canada L5T 1S8

Kenwood Electronics Deutschland GmbH.

Rembrücker Str. 15, 63150 Heusenstamm, Germany

Kenwood Electronics Belgium N.V.

Leuvensesteenweg 248 J, 1800 Vilvoorde, Belgium

Kenwood Electronics France S.A.

13, Boulevard Ney, 75018 Paris, France

Kenwood Electronics U.K. Ltd.

KENWOOD House, Dwight Road, Watford, Herts., WD18 9EB United Kingdom

Kenwood Electronics Europe B.V.

Amsterdamseweg 37, 1422 AC Uithoorn, The Netherlands

Kenwood Electronics Italia S.p.A.

Via G. Sirtori, 7/9 20129 Milano, Italy

Kenwood Electronics Iberica S.A.

Bolivia, 239-08020 Barcelona, Spain

Kenwood Electronics Australia Pty. Ltd.

(A.C.N. 001 499 074)

16 Giffnock Avenue, Centrecourt Estate, North Ryde, N.S.W. 2113 Australia

Kenwood Electronics (Hong Kong) Ltd.

Unit 3712-3724, Level 37, Tower one Metroplaza, 223 Hing Fong Road, Kwai Fong, N.T., Hong Kong

Kenwood Electronics Singapore Pte. Ltd.

1 Ang Mo Kio Street 63, Singapore 569110